



**Smythesdale Streetscape - Precedent Images**  
Golden Plains Shire Council



**THOMSON HAY**  
LANDSCAPE ARCHITECTS

130 Howards Road, WATTLE FLAT VIC 3352  
T 03 5334 5321  
E [office@thomsonhay.com](mailto:office@thomsonhay.com)  
W [www.thomsonhay.com](http://www.thomsonhay.com)

Project:  
NORTHERN STREETSCAPES  
SMYTHESDALE

Prepared for:  
Golden Plains Shire Council

Precedent Images

Date: 21.11.2024



Proposed Large Canopy Trees



*Angophora floribunda* - Rough-barked Apple Gum



*Platanus x acerifolia* - London Plane



*Quercus ilex* - Evergreen Oak



*Quercus palustris* 'Free Fall' - Pin Oak (early defoliating)

Proposed Medium Trees



*Acer campestre* 'Elsrijk' - Compact Feid Maple



*Acer negundo* 'Sensation' - Box Elder



*Carpinus betulus* 'Frans Fontaine' - Oak



*Quercus palustris* 'Pringreen' - Upright Pin Oak



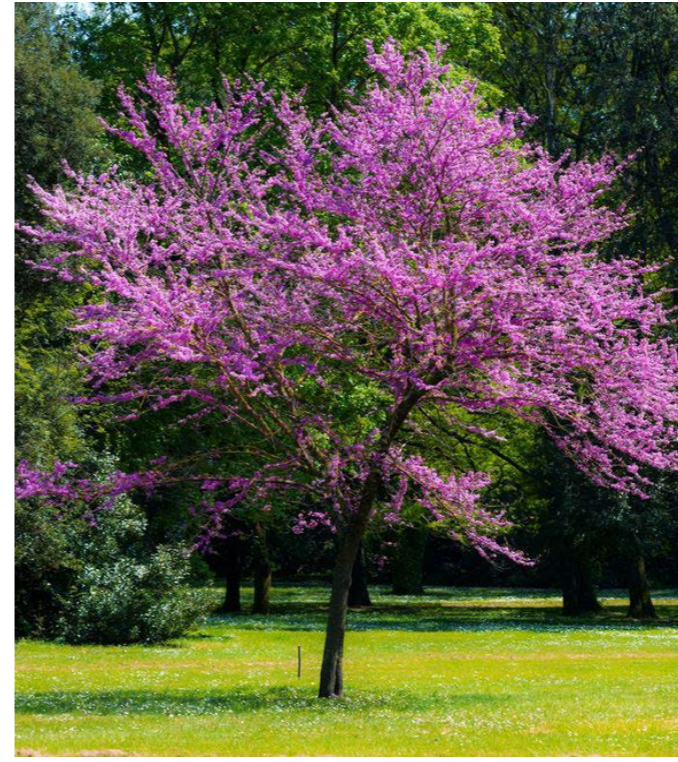
Proposed Small Trees



*Callistemon 'Harkness'* - Bottlebrush ctv.



*Callistemon 'Kings Park Special'* - Bottlebrush ctv.



*Cercis siliquastrum* - Judas Tree



*Lagerstroemia indica x fauriei 'Natchez'* - Crepe Myrtle (white)

Proposed Shrubs



*Correa pulchella 'Fire Bells'* - Correa ctv.



*Ozothamanus obcordatus* - Grey Everlasting

Proposed Groundcovers



*Correa reflexa prostrate* - Prostrate Correa



*Westringia fruticosa 'Low Horizon'* - Coastal Rosemary ctv.



*Grevillea juniperina 'Molonglo'* - Grevillea ctv.



*Chrysocephalum apiculatum* - Common Everlasting



Proposed Bladed Plants



*Dianella tasmanica* 'Tasred' - Dianella cvt.



*Dianella tasmanica* 'Emerald Arch' - Dianella cvt.

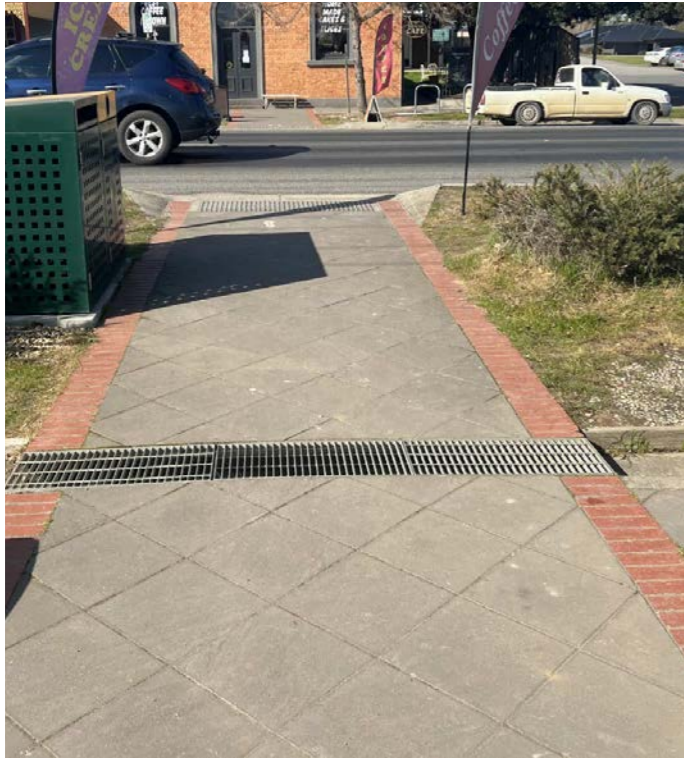


*Dianella revoluta* 'Little Rev'- Flax Lily cvt.

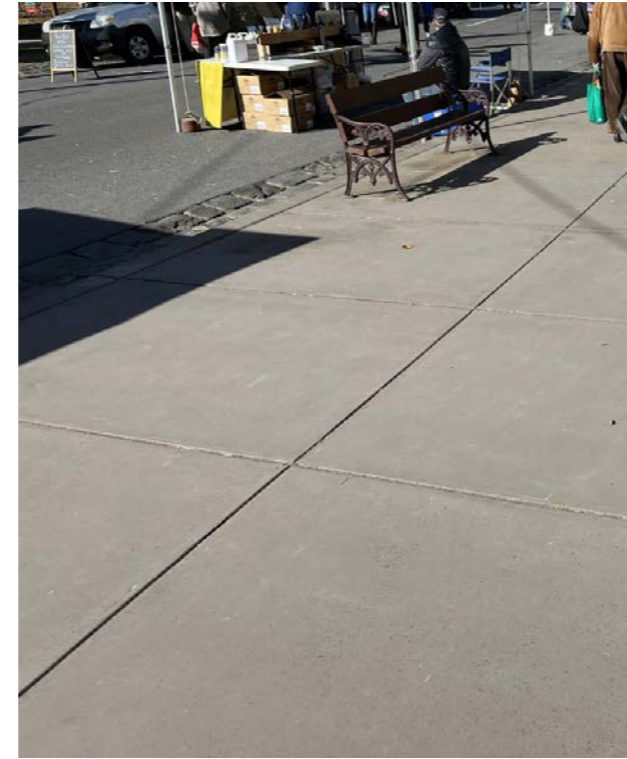


*Lomandra* 'Tanika' - Lomandra cvt.

Proposed Pavement



New feature paving to match existing segmental paving with brick bands

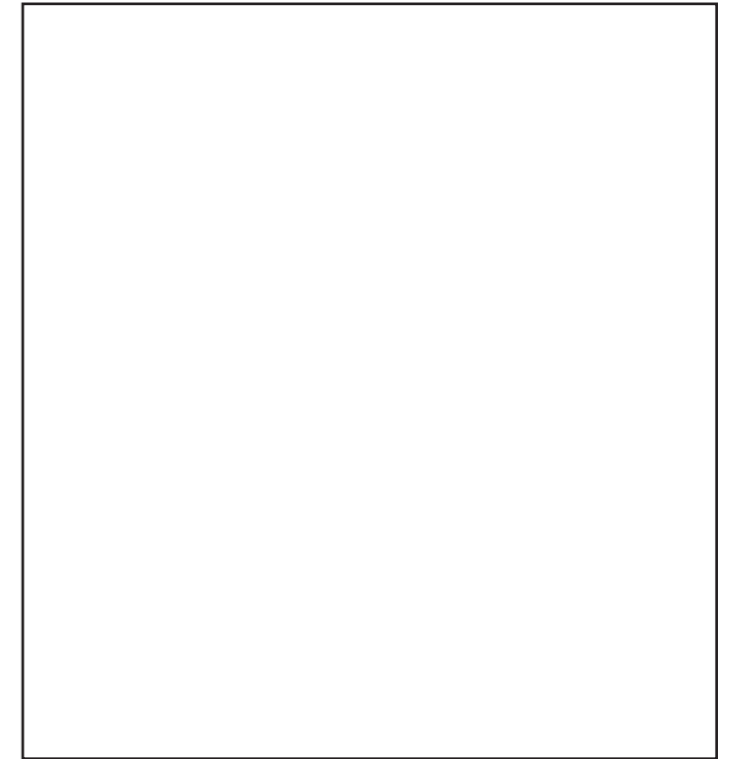


Typical Concrete Pavement with tool joints

Outdoor Structure



Arbor with climbing plants



Bus shelter design to be confirmed by Golden Plains Shire



Outdoor Furniture



Fiesta seat frame colour (i.e. colourbond 'Monument') and timber slats (consider timber effect Aluminium slats)



Fiesta bench frame colour (i.e. colourbond 'Monument') and timber slats (consider timber effect Aluminium slats)



Fiesta picnic table frame colour (i.e. colourbond 'Monument') and timber slats (consider timber effect Aluminium slats)



Existing rubbish and recycle bins to be retained and repainted 'Monument' colour



Moda bike hoop by GX Outdoors



Moda bollard by GX Outdoors



EV Charging Station



Banner poles