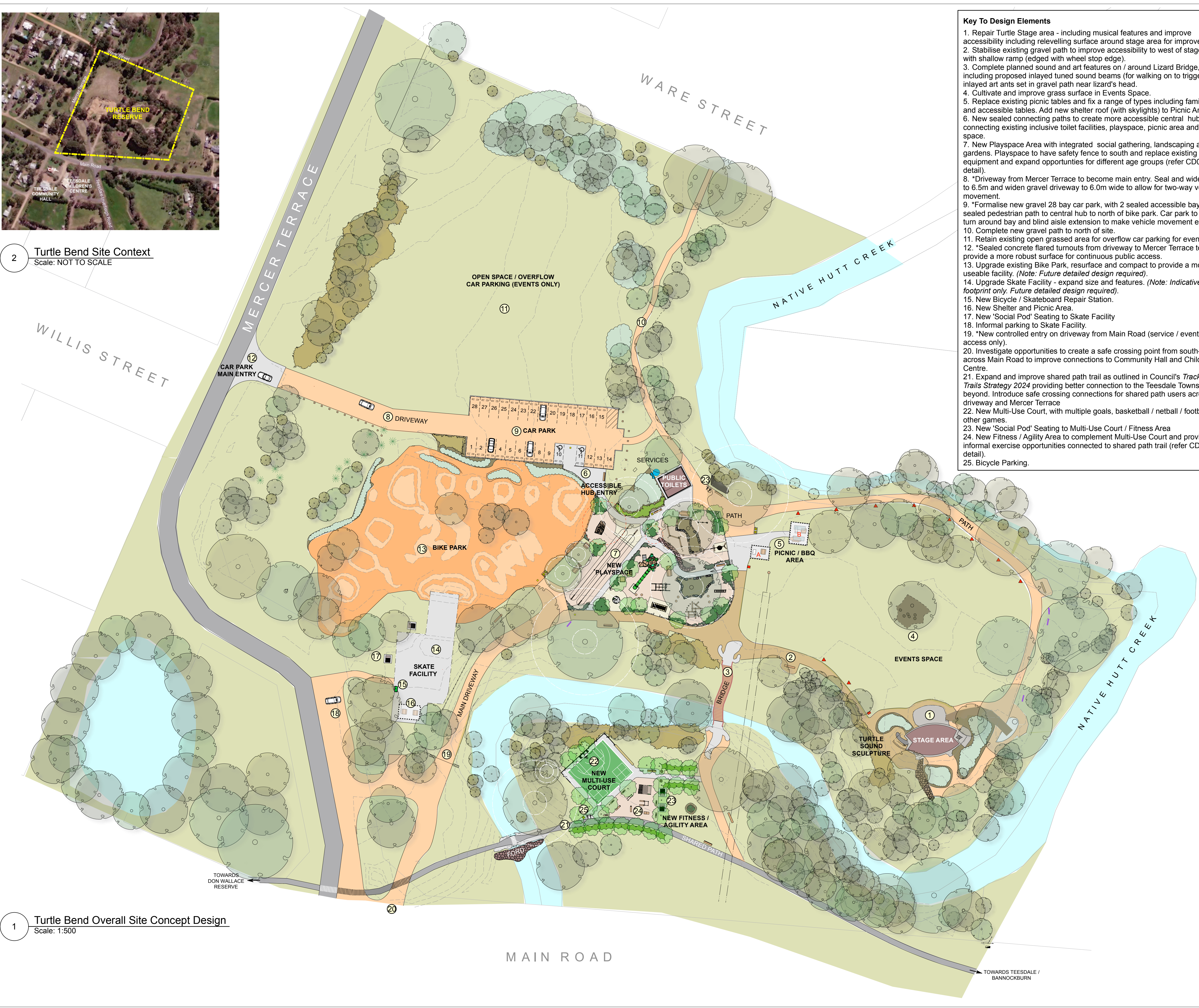




2 Turtle Bend Site Context  
Scale: NOT TO SCALE



1 Turtle Bend Overall Site Concept Design  
Scale: 1:500

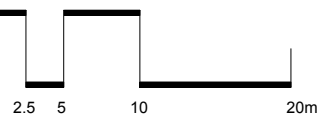
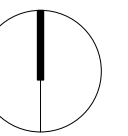
- Key To Design Elements**
1. Repair Turtle Stage area - including musical features and improve accessibility including releveling surface around stage area for improved use.
  2. Stabilise existing gravel path to improve accessibility to west of stage area with shallow ramp (edged with wheel stop edge).
  3. Complete planned sound and art features on / around Lizard Bridge, including proposed inlayed tuned sound beams (for walking on to trigger) and inlayed art ants set in gravel path near lizard's head.
  4. Cultivate and improve grass surface in Events Space.
  5. Replace existing picnic tables and fix a range of types including family sized and accessible tables. Add new shelter roof (with skylights) to Picnic Area B.
  6. New sealed connecting paths to create more accessible central hub connecting existing inclusive toilet facilities, playspace, picnic area and events space.
  7. New Playspace Area with integrated social gathering, landscaping and gardens. Playspace to have safety fence to south and replace existing play equipment and expand opportunities for different age groups (refer CD04 for detail).
  8. \*Driveway from Mercer Terrace to become main entry. Seal and widen entry to 6.5m and widen gravel driveway to 6.0m wide to allow for two-way vehicle movement.
  9. \*Formalise new gravel 28 bay car park, with 2 sealed accessible bays and sealed pedestrian path to central hub to north of bike park. Car park to have a turn around bay and blind aisle extension to make vehicle movement easier.
  10. Complete new gravel path to north of site.
  11. Retain existing open grassed area for overflow car parking for events.
  12. \*Sealed concrete flared turnouts from driveway to Mercer Terrace to provide a more robust surface for continuous public access.
  13. Upgrade existing Bike Park, resurface and compact to provide a more useable facility. (Note: Future detailed design required).
  14. Upgrade Skate Facility - expand size and features. (Note: Indicative footprint only. Future detailed design required).
  15. New Bicycle / Skateboard Repair Station.
  16. New Shelter and Picnic Area.
  17. New 'Social Pod' Seating to Skate Facility
  18. Informal parking to Skate Facility.
  19. \*New controlled entry on driveway from Main Road (service / event vehicle access only).
  20. Investigate opportunities to create a safe crossing point from south-north across Main Road to improve connections to Community Hall and Children's Centre.
  21. Expand and improve shared path trail as outlined in Council's *Tracks and Trails Strategy 2024* providing better connection to the Teesdale Township and beyond. Introduce safe crossing connections for shared path users across driveway and Mercer Terrace
  22. New Multi-Use Court, with multiple goals, basketball / netball / football and other games.
  23. New 'Social Pod' Seating to Multi-Use Court / Fitness Area
  24. New Fitness / Agility Area to complement Multi-Use Court and provide informal exercise opportunities connected to shared path trail (refer CD05 for detail).
  25. Bicycle Parking.

- LEGEND**
- Existing Trees (with SRZ and TPZs for trees impacted by changes)
  - New Shade Trees
  - Existing Understorey Planting
  - New Native Planting
  - Paths / Surfacing (Compacted Gravel)
  - Paths / Surfacing (Stabilised Gravel)
  - Paths / Surfacing (Concrete)
  - Paths / Surfacing (Bitumen)
  - Grass / Lawn
  - Existing Creek Channel / Water Body
  - Rocks / Rocks Surfacing / Rockwall
  - Timber Bollards / Timber Fencing
  - Rubbish Bins
  - Existing Footbridge
  - Traffic Control Barriers
  - New Formalised Car Parking Bays
  - Play Equipment
  - Upgraded Skate Footprint
  - New Multi-Use Court
  - Existing Toilet Facilities
  - Upgraded Seating / Picnic Settings
  - New Social Pods
  - New Bike Parking
  - New Bicycle / Skateboard Maintenance
  - Interpretive Signage
  - Power
  - Water Tank
  - Service Pits / Drainage
  - Contours
  - Design Description Numbering

Issue:	Amendment:	Date:
A	Change to scale and activity with multi-use court to improve tree protection. Relocation of social pods and rebrand wall. Implementation Plan added to set.	03.12.24
B	Changes to notes as per Golden Plains Shire directions.	11.12.24
C	Changes to priority ratings on Implementation Plan.	17.12.24
D		
E		
F		



**Bricolage design**  
PO Box 220,  
Healesville Main Street VIC 3777  
t: 0447 622 587  
e: elizabeth@bricolage.design.com.au  
w: www.bricolagedesign.com.au

Date: Oct 2024	Scale: 1:500 @ A1	North:
Drawn: EC		
Approved: EC		

This drawing is a *concept design* drawing only, not a working drawing and is not to be used for construction purposes.

The drawing is copyright and remains the property of the landscape architect

<b>GOLDEN PLAINS SHIRE</b> <b>TEESDALE TURTLE BEND -</b> <b>EVENTS &amp; RECREATION SPACE</b> Main Road, Teesdale	Sheet: 3 of 6 in this set
<b>FINAL CONCEPT DESIGN -</b> <b>OVERALL SITE PLAN</b>	Dwg No: <b>278-CD-03</b> REVISION C